



National Institute of Food and Agriculture
www.nifa.usda.gov

National Institute of Food and Agriculture Reorganization

ESCOP Social Science Subcommittee Feb. 19-20, 2013

Pat Hipple, NPL
USDA, NIFA, IYFC, DFCS



Overview

- **Reorganization Background**
 - Danforth Study
 - Create 21
 - REE Mission Area Reorganization
- **Food, Conservation, and Energy Act of 2008**
- **From CSREES to NIFA**
- **5 Grand Societal Challenges**
- **NIFA Organizational Structure**



Reorganization Background

- **Danforth Study**
 - Initiated by Congress
 - Focus: NRI & Competitive Research
- **Create 21**
 - Initiated by Land-grant Institutions
 - Focus: Formula Funds & Federal Leadership
- **REE Mission Area Reorganization**
 - Initiated by Under Secretary
 - Focus: Program Coordination & Resource Utilization



Food, Conservation, and Energy Act 2008 “Farm Bill”

- **Required Secretary of Agriculture to establish NIFA**
- **Farm Bill and Guiding Principles called for Integration across Programs, Functions, Funding Authorities, and Funding Mechanisms**
- **NIFA established October 2009**



From CSREES to NIFA

- **Optimize organizational structure to effectively serve stakeholders**
- **Enhance quality, relevancy, and performance of programs**
- **NIFA organizational structure announced October 2010**



National Institute of Food and Agriculture
www.nifa.usda.gov



INVESTING IN SCIENCE | SECURING OUR FUTURE

**NIFA will enhance and elevate
the stature of
food and agricultural sciences
and ultimately grow support for
research, education, and Extension**



National Institute of Food and Agriculture
www.nifa.usda.gov



INVESTING IN SCIENCE | SECURING OUR FUTURE

NIFA Mission Statement

**Leading Food and Agricultural
Sciences to Create a Better Future
for the Nation and the World**



Refocusing NIFA Science

- **NIFA investments will focus on 5 grand societal challenges:**
 - **Climate change**
 - **Bioenergy**
 - **Food safety**
 - **Nutrition and childhood obesity**
 - **Global food security**

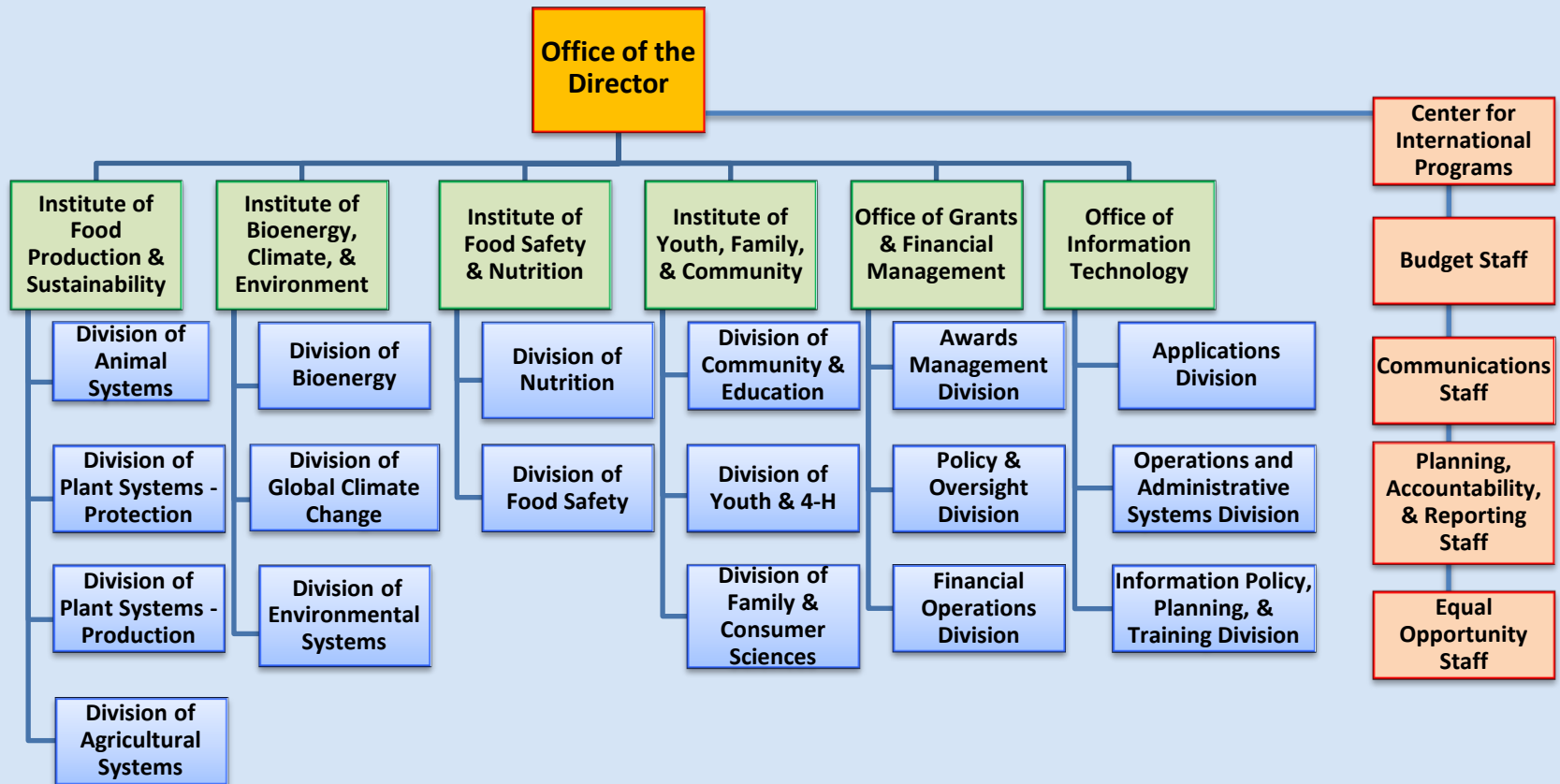


National Institute of Food and Agriculture
www.nifa.usda.gov

NIFA Organizational Structure



INVESTING IN SCIENCE | SECURING OUR FUTURE





Office of the Director

Director

Sonny Ramaswamy

Meryl Broussard
Deputy Director for
Agriculture and Natural
Resources

Ralph Otto
Deputy Director for
Food and Community
Resources

Institute of
Food
Production &
Sustainability

Institute of
Bioenergy,
Climate, &
Environment

Institute of
Food Safety
& Nutrition

Institute of
Youth,
Family, &
Community

Office of
Grants &
Financial
Management

Office of
Information
Technology

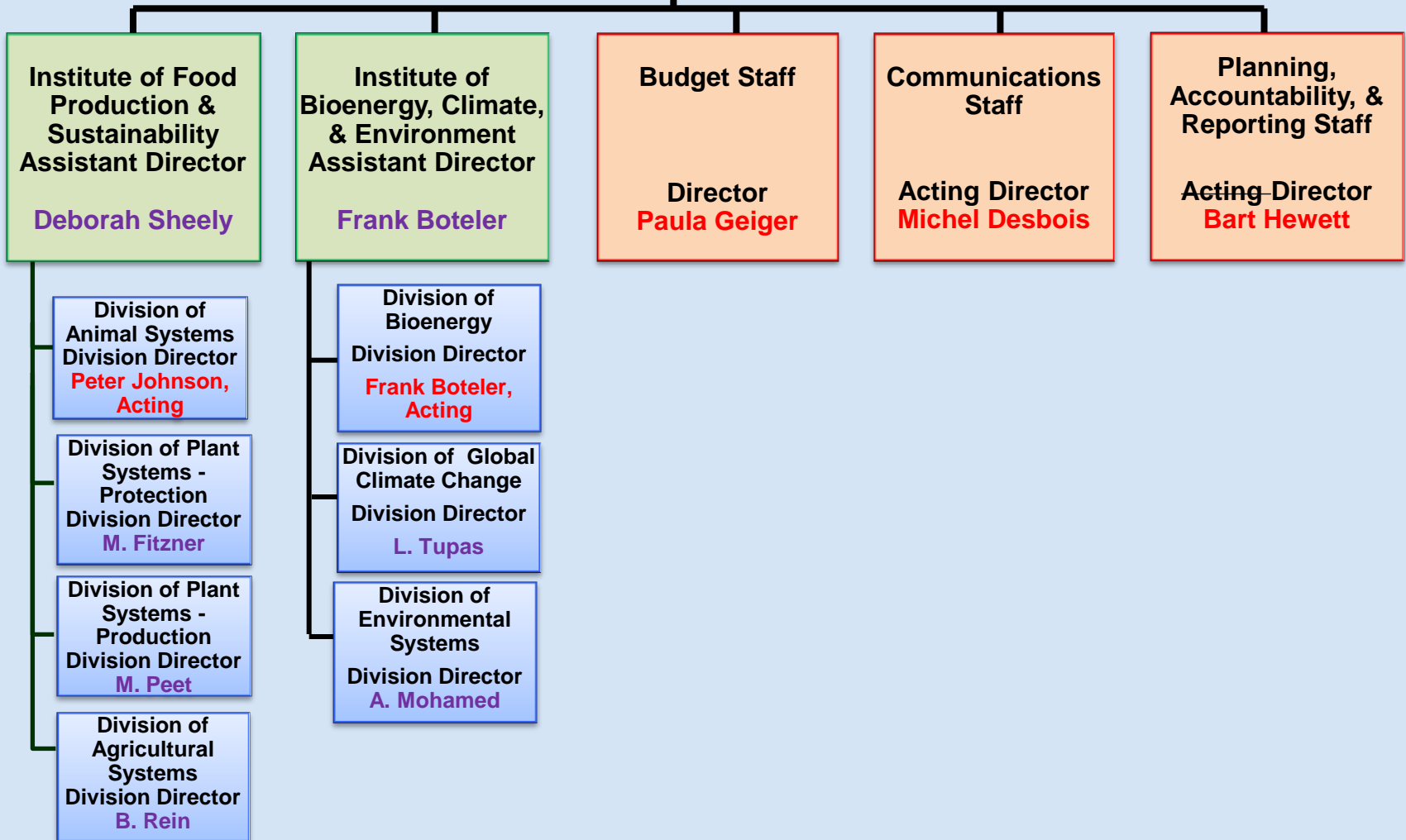


Administration and Functions of Institutes in NIFA

- **Institutes to be led by principal scientists + assistant directors with experience in USDA administration and policies,**
- **Will look to examples of best practices for operations of the institutes, and**
- **Will seek advice and input from external groups of stakeholders and expert scientists.**



**Deputy Director
for Agriculture and Natural
Resources**
Meryl Broussard





**Deputy Director
for Food and Community
Resources**
Ralph Otto

**Institute of Food
Safety & Nutrition**

**Assistant Director
Robert Holland**

**Institute of Youth,
Fam. & Community**

**Assistant Director
Muquarrab Qureshi**

**Office of Grants &
Financial
Management**

**Assistant Director
Vacant**

**Office of
Information
Technology**

**Assistant Director
Michel Desbois**

**Equal Opportunity
Staff**

**Director
Curt Deville**

**Center for
International
Programs**

**Director
Hiram Larew**

**Division of
Nutrition**

**Division Director
Dionne Toombs**

**Division of
Community and
Education**

**Division Director
Greg Smith,
Acting**

**Awards
Management
Division**

**Division Director
Edward Nwaba**

**Applications
Division**

**Division Director
Michel Desbois,
Acting**

**Division of Food
Safety**

**Division Director
J. Singleton**

**Division of Youth
and 4-H**

**Division Director
L. Lauxman**

**Policy and
Oversight Division**

**Division Director
William Bethel**

**Operations and
Administrative
Systems Division**

**Division Director
D. Williams**

**Division of Family
and Consumer
Sciences**

**Division Director
Caroline Crocoll**

**Financial
Operations
Division**

**Division Director
T. Johnson**

**Information Policy,
Planning, and
Training Division**

**Division Director
J. Hitchcock**



National Institute of Food and Agriculture
www.nifa.usda.gov

NIFA

INSTITUTE OF FOOD PRODUCTION AND SUSTAINABILITY

***Enhancing global food security through
productive and sustainable agricultural systems***



INVESTING IN SCIENCE | SECURING OUR FUTURE



Office of the Director

**Institute of
Food Production and
Sustainability**
Assistant Director
Deborah Sheely

**Division of
Animal Systems**

**Peter Johnson,
Acting**

**Division of Plant
Systems –
Production**

M. Fitzner

**Division of Plant
Systems –
Protection**

M. Peet

**Division of
Agricultural
Systems**

B. Rein



National Institute of Food and Agriculture
www.nifa.usda.gov

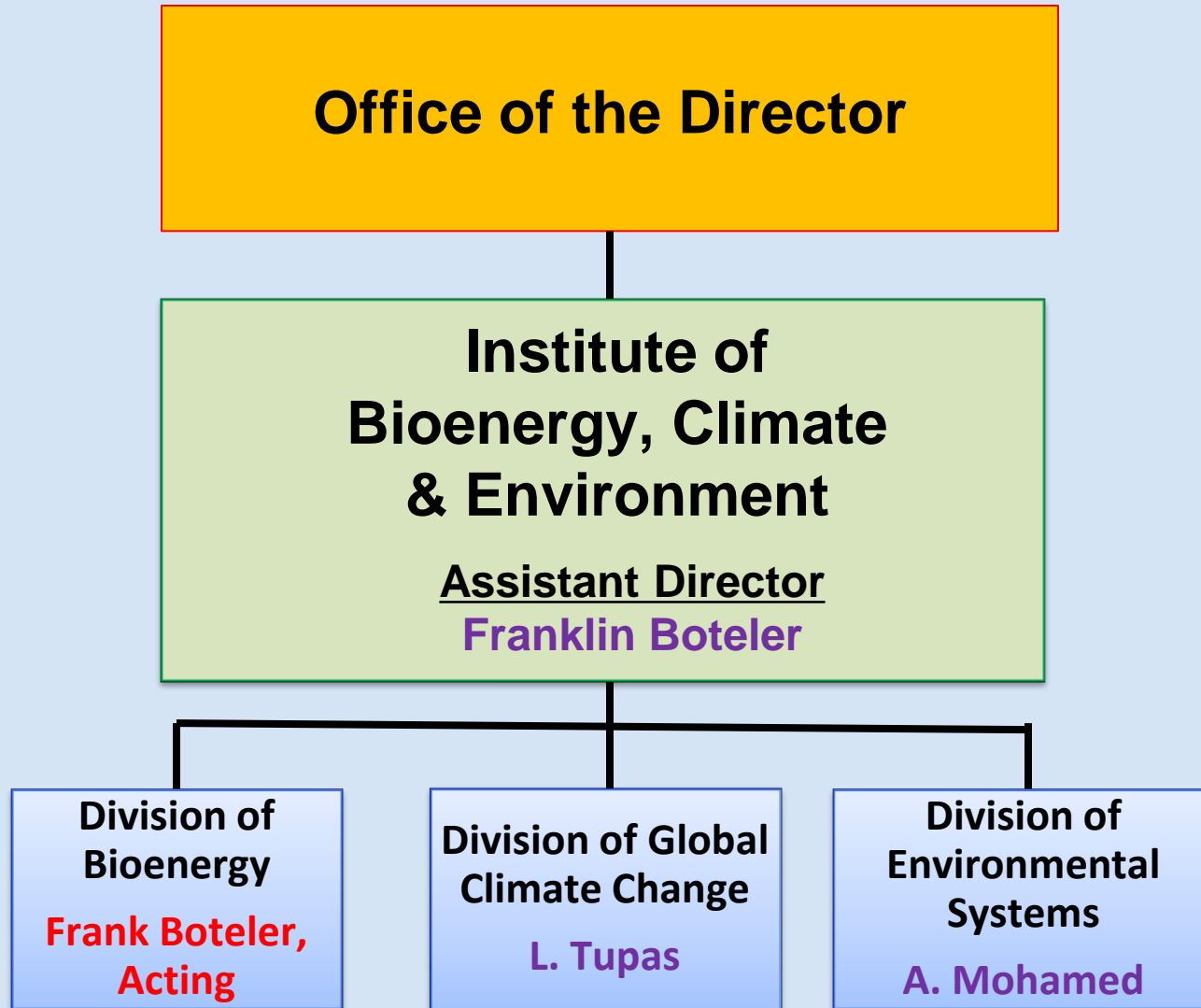


INSTITUTE OF BIOENERGY, CLIMATE, AND ENVIRONMENT

*Ensuring energy independence
through clean, bio-based systems*

*Ensuring sustainable and adaptive agro-ecosystems
in response to climate change*







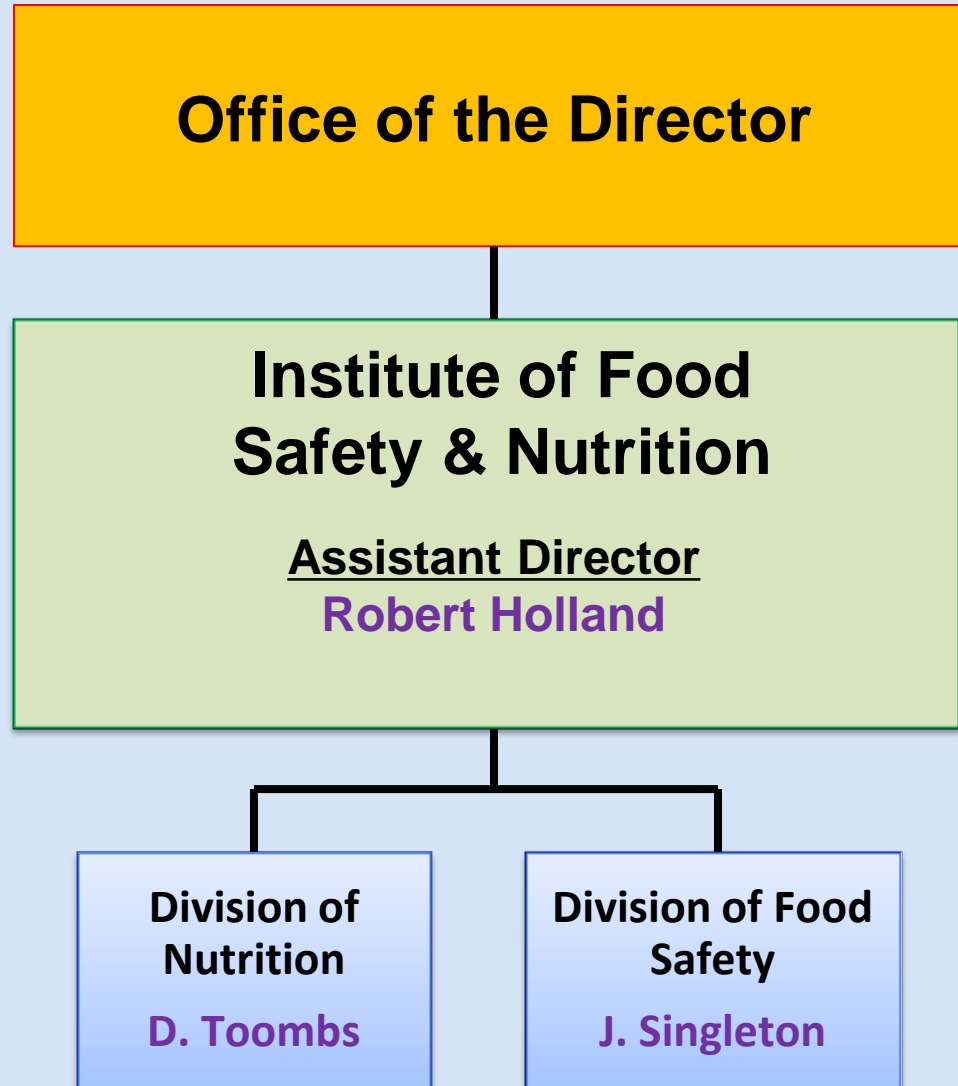
National Institute of Food and Agriculture
www.nifa.usda.gov



INSTITUTE OF FOOD SAFETY AND NUTRITION

Ensuring a safe food supply
Improving citizens' health through nutrition
Reducing childhood obesity
Improving food quality







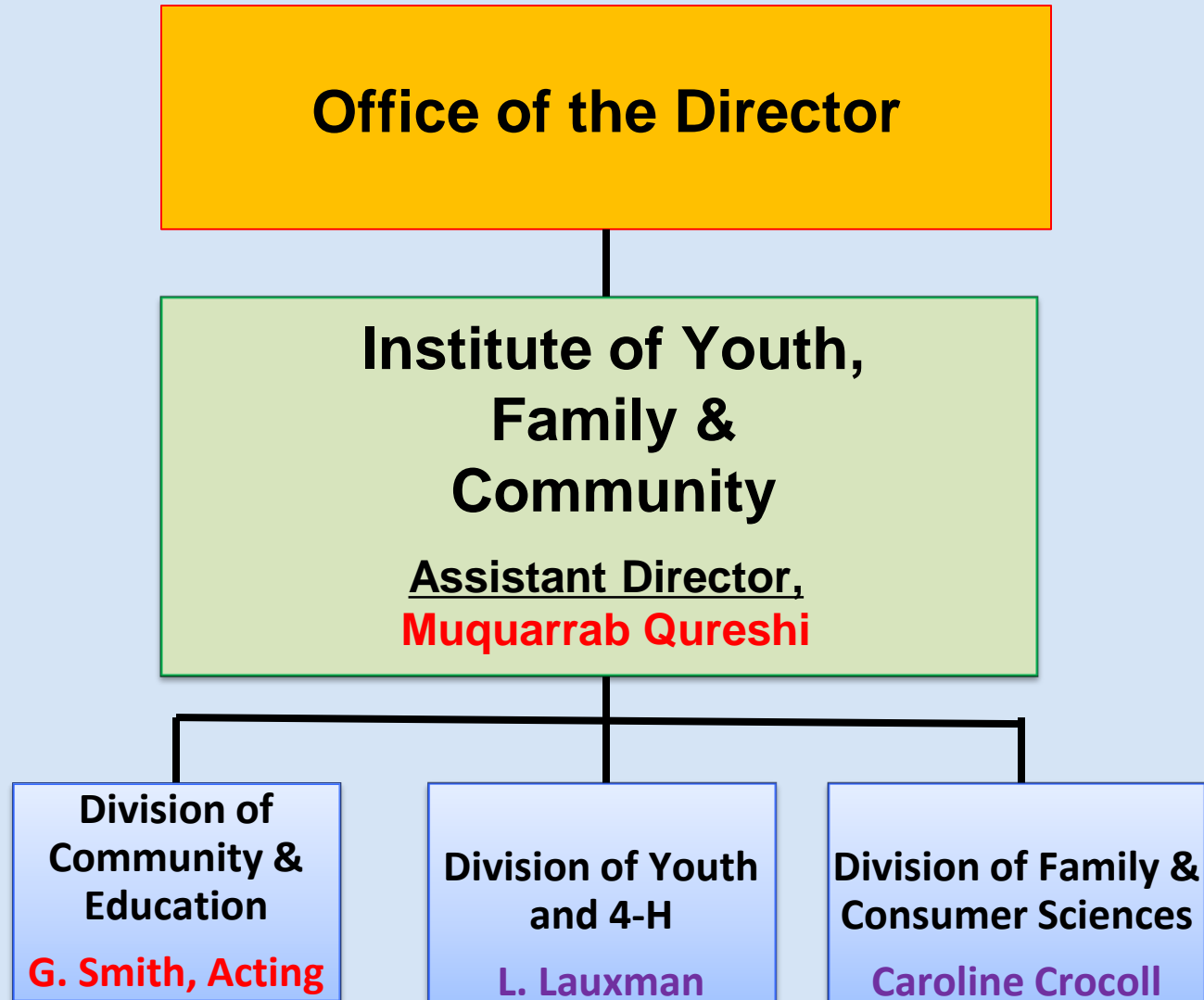
National Institute of Food and Agriculture
www.nifa.usda.gov



INSTITUTE OF YOUTH, FAMILY, AND COMMUNITY

Enabling vibrant and resilient communities
Preparing the next generation of scientists
Enhancing science capacity in
minority-serving institutions
Enhancing youth and family development







National Institute of Food and Agriculture
www.nifa.usda.gov

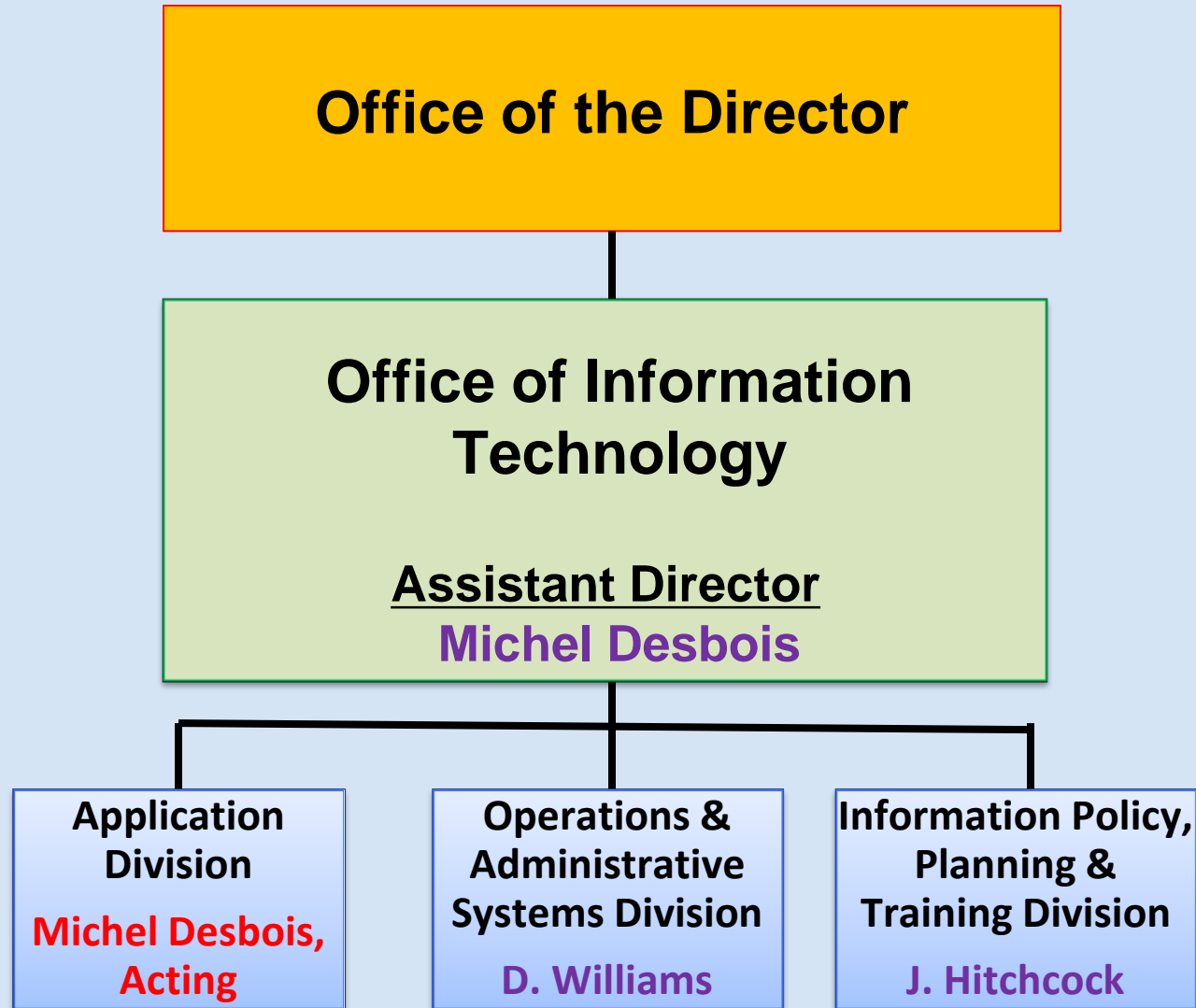


CENTER FOR INTERNATIONAL PROGRAMS

Leveraging the knowledge and commitment of U.S. talent to enhance the lives of those in developing countries









NIFA's Next Steps

- ~~• Establish Principal Scientist positions for each of the new Institutes~~
- Ensure that educational functions of NIFA are effectively integrated across the agency
- Ensure that NIFA is recognized as a globally engaged science agency
- Establish a Human Capital Development Task Force for NIFA
- Establish a NIFA – 'Best Place to Work Initiative'



NIFA's Next Steps cont.

- **Establish a Science Leadership Council**
- **Establish Mission Critical Chartered Teams**
- **Establish a Competitive Programs Task Force**
- **Establish an Infrastructure and Capacity Programs Task Force**
- **Establish a Science Policy Task Force**



NIFA

INVESTING IN SCIENCE | SECURING OUR FUTURE

